

# GREATER HARTFORD RYAN WHITE PLANNING COUNCIL



## OUR MISSION



The mission of the Greater Hartford Ryan White Part A Planning Council is to determine priorities for how Ryan White Part A funds are allocated based on the documented needs of the HIV/AIDS communities within Tolland, Hartford, and Middlesex Counties. It is the responsibility of the Council to ensure that all infected and affected communities and populations of the area are represented on the Planning Council. We are here today to invite you to become a member.

## FEDERAL FUNDED SERVICES

- Emergency Financial Assistance (EFA), Housing, Medical Case Management (incl Treatment Adherence)
- Outpatient/ Ambulatory Medical Care, Mental Health, Early Intervention Services (EIS)
- Substance Abuse- Outpatient, Medical Transportation Services, Psychosocial Support Services
- Food Bank/Home Delivered Meals, Oral Health

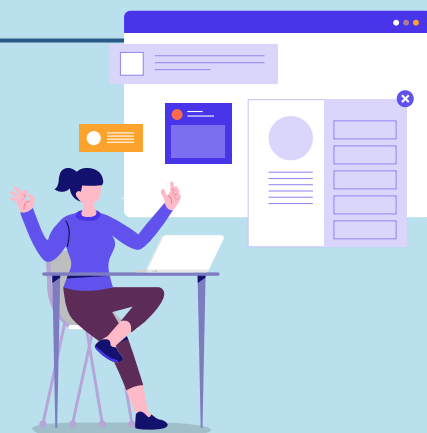


## TOLLAND COUNTY PROVIDERS

See Hartford County Providers

## HARTFORD COUNTY PROVIDERS

- AIDS CONNECTICUT [ACT], AIDS CONNECTICUT - CONNECTIONS DROP-IN CENTER
- CHARTER OAK HEALTH CENTER [COHC]
- CT CHILDREN'S SPECIALTY GROUP (formerly CT CHILDREN'S MEDICAL CENTER)
- HARTFORD HOSPITAL (BROWNSTONE)
- HARTFORD GAY & LESBIAN HEALTH COLLECTIVE, INC. [HGLHC],
- LATINO COMMUNITY SERVICES INC. [LCS]
- PROSPECT ROCKVILLE HOSPITAL [ROCKVILLE]
- MERCY HOUSING & SHELTER CORPORATION [MERCY]
- SAINT FRANCIS HOSPITAL [BURGDORF CLINIC]
- UNIVERSITY OF CONNECTICUT HEALTH CENTER [UCONN]
- GREATER HARTFORD HARM REDUCTION COALITION INC [GHRC]



## MIDDLESEX COUNTY

1. COMMUNITY HEALTH CENTER/ OASIS [CHC]
2. CT CHILDREN'S SPECIALTY GROUP (FORMERLY CT CHILDREN'S MEDICAL CENTER)
3. HUMAN RESOURCES AGENCY OF NEW BRITAIN/ WELLNESS RESOURCE CENTER [HRA/NB]
4. PROSPECT ROCKVILLE HOSPITAL [ROCKVILLE]
5. THE HOSPITAL OF CENTRAL CT [THOCC] (FORMERLY NEW BRITAIN GENERAL HOSPITAL)



## MEMBERSHIP ON THE PLANNING COUNCIL

Advocacy, Education, Affect change, Legislative;



## HOW TO APPLY

Individuals with life experience are welcome and are critical to the process. Scan the QR Code or the other medium below:

## CONTACT US

Ryan White Planning Council  
178 Oakwood Drive, Glastonbury, CT 06033  
860-267-5439; [ryanwhitehartford@amplifyct.org](mailto:ryanwhitehartford@amplifyct.org)  
[www.ryanwhitehartfordct.info](http://www.ryanwhitehartfordct.info)

